

REVISION HISTORY					
ZONE	REV	E.C.O.	DESCRIPTION	BY/DATE	APPROVED/DATE

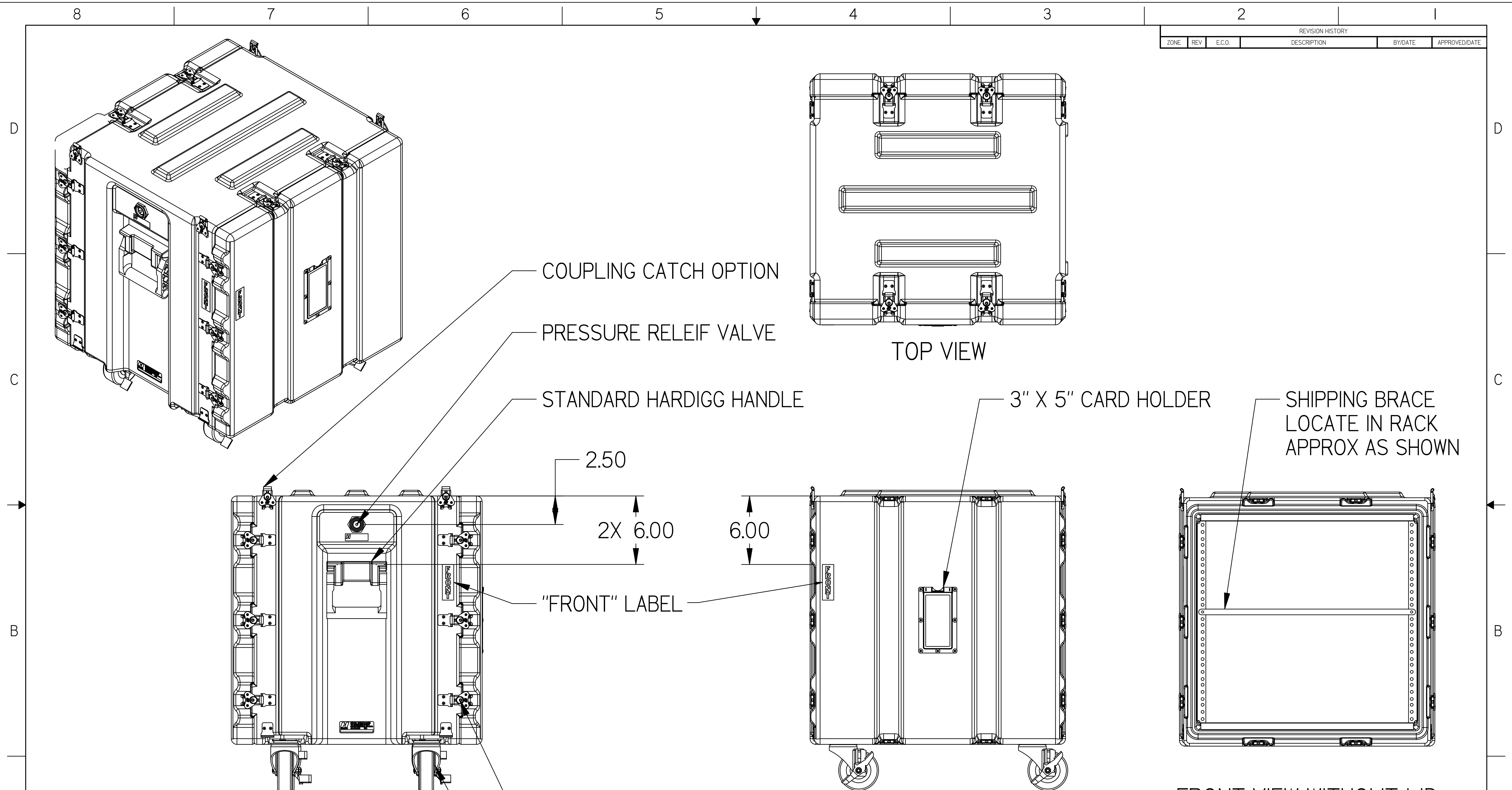


IMAGE OF CASE IN STANDARD CONFIGURATION

STANDARD CASE CONSISTS OF : Shell Color - Black, Catches and Strikes (non-locking), Handles, gasket and Hinges when applicable
 NOTE: This drawing represents a Hardigg case in standard configuration with hardware placed in standard locations. These options, as well as other options, are available upon request, for an additional charge. If custom options or locations are required, Hardigg must quote separately.

SHELL COLOR AND HARDWARE FINISH MUST BE SPECIFIED AT TIME OF ORDER.

DIMENSIONS (REFERENCE ONLY)	INSIDE		OUTSIDE	
	INCH	MM	INCH	MM
OVERALL LENGTH	21.2	538	22	558
OVERALL WIDTH	19.2	487	22.4	569
OVERALL HEIGHT	20.5	520	22.3	566
LID HEIGHT	1.6	41	2.0	51
BASE HEIGHT				
MID LENGTH (DE)	18	457		
MID WIDTH (DE)	19.2	487		
WEIGHT LBS/KG	33LBS	15KG		

HARDIGG CASES
 A Division of HARDIGG INDUSTRIES, INC.
 South Deerfield, Massachusetts 01373 USA

TITLE CONFIGURABLE CASE	CAGE CODE 11214
DWG NO. PR2018-011801	SCALE: 1:4
DR: Darren Gale	DATE: 1/6/2009
REV: -	SHEET: 1 OF 1