

HARDIGG
STORM CASE[®]
 Defy the Elements[®]

iM3220



Press & Pull latches hold fast even under duress, yet open effortlessly.

Heavy-duty, in-line wheels roll solidly and smoothly under any load.

Add the security of your own padlock to unbreakable, molded-in hasps.

The unique hinges with feet hold fast under impact and create a flat surface for upright stability.

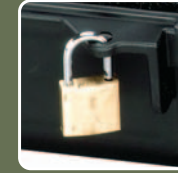
Double-layered, soft-grip handles combine strength with long lasting comfort.



Multiple handles and rugged in-line wheels provide ease of transport.

Multiple latches ensure maximum security and durability.

Storm Cases are designed to transport and protect your valuables even under the most adverse conditions.



Dimensions:
 Exterior Dimensions (LxWxH)
 47.2 x 16.5 x 9.2 in.
 1198 x 419 x 234 mm

Interior Dimensions* (LxWxH)
 44.0 x 14.0 x 8.5 in.
 1118 x 356 x 216 mm
 *Total height shown; includes lid depth of two inches.

WEIGHT (EMPTY): 20.4 lbs / 9.3 kg

FEATURES:

- Six Press & Pull Latches
- Two Double-layered, Soft-grip Handles
- Two Padlockable Hasps
- In-line Wheels
- Vortex[®] Valve
- Flush Powerful Hinges
- Lightweight Strong HPX[®] Resin
- Watertight
- Guaranteed For Life

COLORS: 
 Black or Olive Drab

INTERIOR FOAM:
 Solid Foam or No Foam

STANDARD OPTIONS:

- Manual Purge Valve
- Lid Stays
- Lock
- Shoulder Strap

CUSTOMIZED OPTIONS:

- Custom Foam
- Label (no label, custom labels)
- Custom Colors
- Molded-in 3D Graphics
- Foil Stamping

The Storm Case Lineup



Storm outpowers the competition.

iM3220

Feature	Competition	Storm Case	Storm Case Advantage
Case Material	<ul style="list-style-type: none"> Polypropylene or ABS 	<ul style="list-style-type: none"> HPX® High Performance Resin 	<ul style="list-style-type: none"> Better Impact Resistance Guaranteed for Life Lightweight
Latches	<ul style="list-style-type: none"> Narrow “Knuckle Buster” Design May Pop Open When Dropped 	<ul style="list-style-type: none"> Press & Pull Operation with Extra Strength Wide Design Won’t Pop Open When Dropped 	<ul style="list-style-type: none"> Pain Free Latch Operation That’s Twice as Strong More Secure Case Closure
Purge Valve	<ul style="list-style-type: none"> Manual Pressure Adjustment Valve Screws Out (Could get lost) 	<ul style="list-style-type: none"> Vortex® Valve Valve Won’t Fall Out 	<ul style="list-style-type: none"> Automatically Adjusts to Changing Environments No Lost Valves
Carry Handles	<ul style="list-style-type: none"> Hard, One-piece Construction or Thinly Padded with Harder Rubber 	<ul style="list-style-type: none"> Durable Inside Core with Soft Overlay 	<ul style="list-style-type: none"> More Comfortable to Carry
Nameplate Area	<ul style="list-style-type: none"> Adhesive Labels 	<ul style="list-style-type: none"> Adhesive Labels Custom 3-D Logo Option 	<ul style="list-style-type: none"> Easy Customization Permanent, Molded-In Logos That Can’t Fall Off
Foam System	<ul style="list-style-type: none"> Single Layer of Foam 	<ul style="list-style-type: none"> Multilayer Foam 	<ul style="list-style-type: none"> Highly Customizable to Your Individual Needs

Life is an endurance test—so each Storm Case passes extreme testing requirements.

Test	Specifications Met	Description
Drop Test	FED-STD-101C, Method 5007.1, Paragraph 6.3, Procedure A, Level A. Tests are superseded and concurrent with ASTM B 4169, DC-18, Assurance Level 1, Schedule A.	A series of 26 drops, one on each corner, edge, and face, from 19” to 30”, depending on the gross weight of the case, with loads of 15 lbs to 70 lbs (depending on case size).
Falling Dart Impact	ATA 300, Category I, “General Requirements for Category I and II Reusable Containers”	A dart weighing 13.22 lbs with a 1.25” hemispherical end was dropped on each case from 19.68”.
Vibration (loose cargo)	FED-STD-101C, Method 5019 Tests are superseded and concurrent with ASTM B 4169, DC-18, Assurance Level 1, Schedule F.	Each case was vibrated for 20 minutes per axis. 1-inch peak to peak at around 4.75 Hz.
Vibration (sweep)	ATA 300, (Jan 15/96) which states in Appendix II, B.4 This test also exceeds the specifications listed in MIL-STD-648C and may also fulfill ISO 8318 and ISO 2247.	Vibration Test for Category I containers – Vibration tests shall be conducted on Category I containers in accordance with ASTM Designation D-999, Procedure B, within the range of 5 to 50 cycles per second for a period of not less than two (2) hours.
Simulated Rainfall	MIL-STD-810F, Method 506.4, Procedure II of 4.1.2 FED-STD-101C Method 5009.1, Sec 6.7.1 Tests are superseded and concurrent with ASTM B 4169, DC-18, Assurance Level 1, Schedule H.	Four inches of rain per hour for 20 minutes each side. This was followed by a 4-hour test at 4” per hour on the top. Both tests saw the case heated to 18°F higher than the water temp.
Immersion	MIL-STD-810F, Method 512.4	A 1-meter (3.281 feet) immersion for 1 hour with the case being heated to 40°F higher than the water temperature.

Storm Cases are more than just watertight, padlockable and **made in the USA**, they’re also Guaranteed for Life. Interested in Harnessing the Power of a Storm? Call us at **800.542.7344** or visit us online at **StormCase.com**.



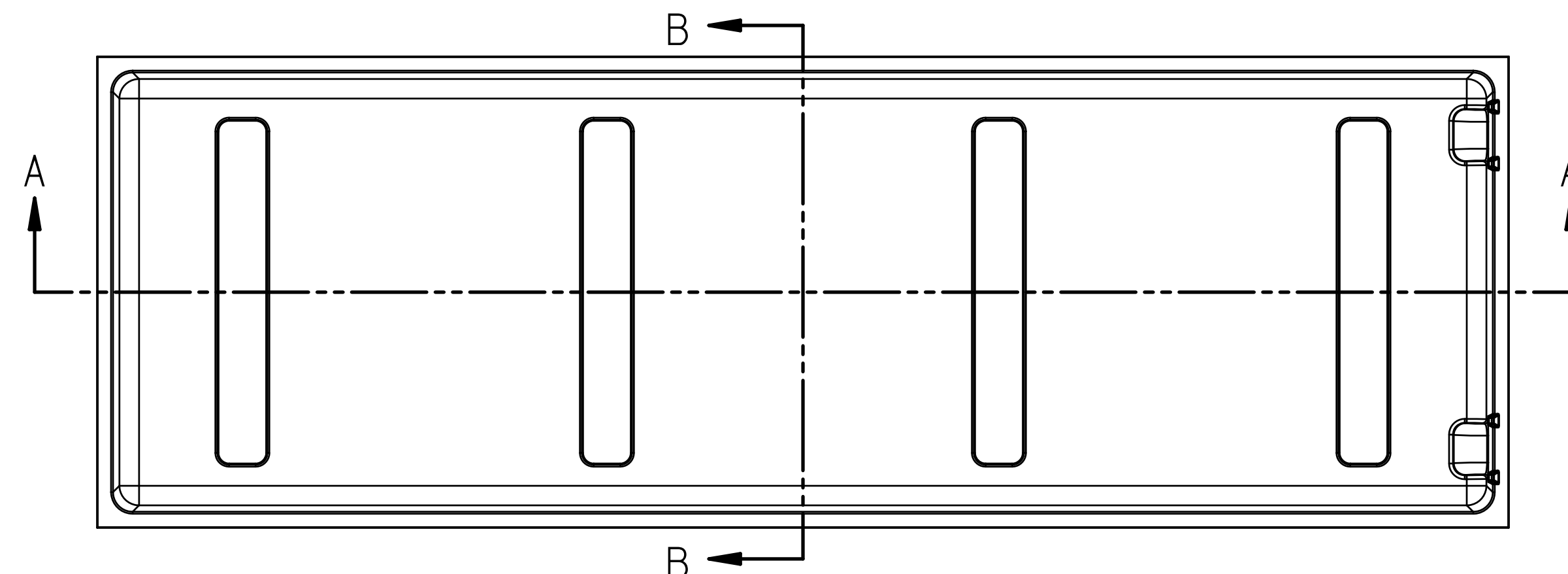
• 147 North Main Street, South Deerfield, MA 01373 • 800.542.7344 • StormCase.com
 • Unit 4, Brookfield Industrial Estate, Leaon Road, Ashford, Kent TN23 4TU, UK • +44(0)1233 895895 • HardiggEurope.com
 • 360 Boul. Du Seminaire, N. Local 20, St-Jean-sur-Richelieu, QC, Canada J3B 5L1 • 450.348.2753 • Hardigg.com



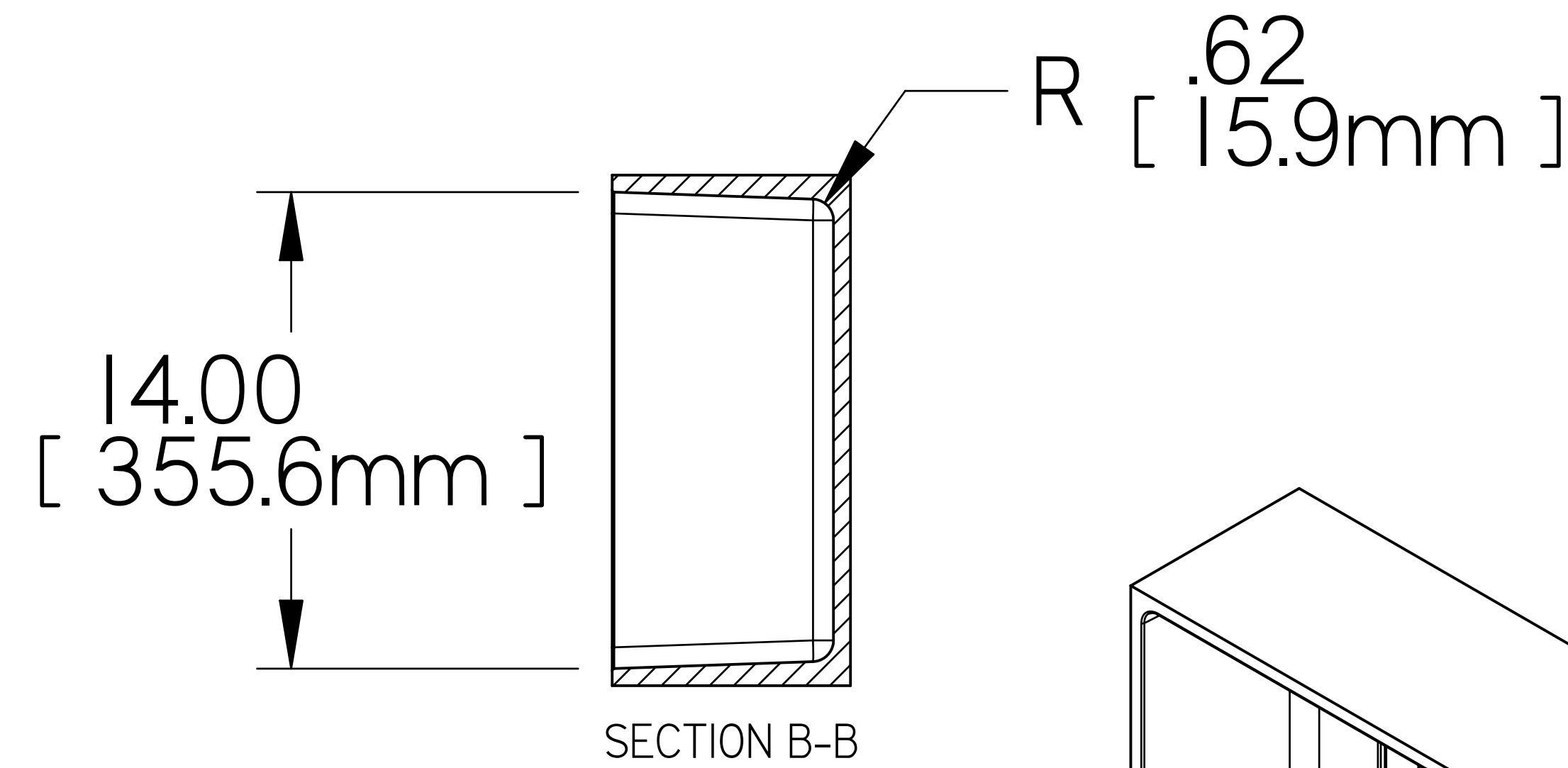
Trademarks owned by Hardigg Industries, Inc. © Hardigg Industries, Inc. 2007 • Made in the USA.

NOTES:
 1. ALL DIMENSIONS ARE TO INTERNAL GEOMETRY OF CASE.
 2. CONTAINER SIDES ARE AT A 2° DRAFT.
 3. TOLERANCES UNSPECIFIED.

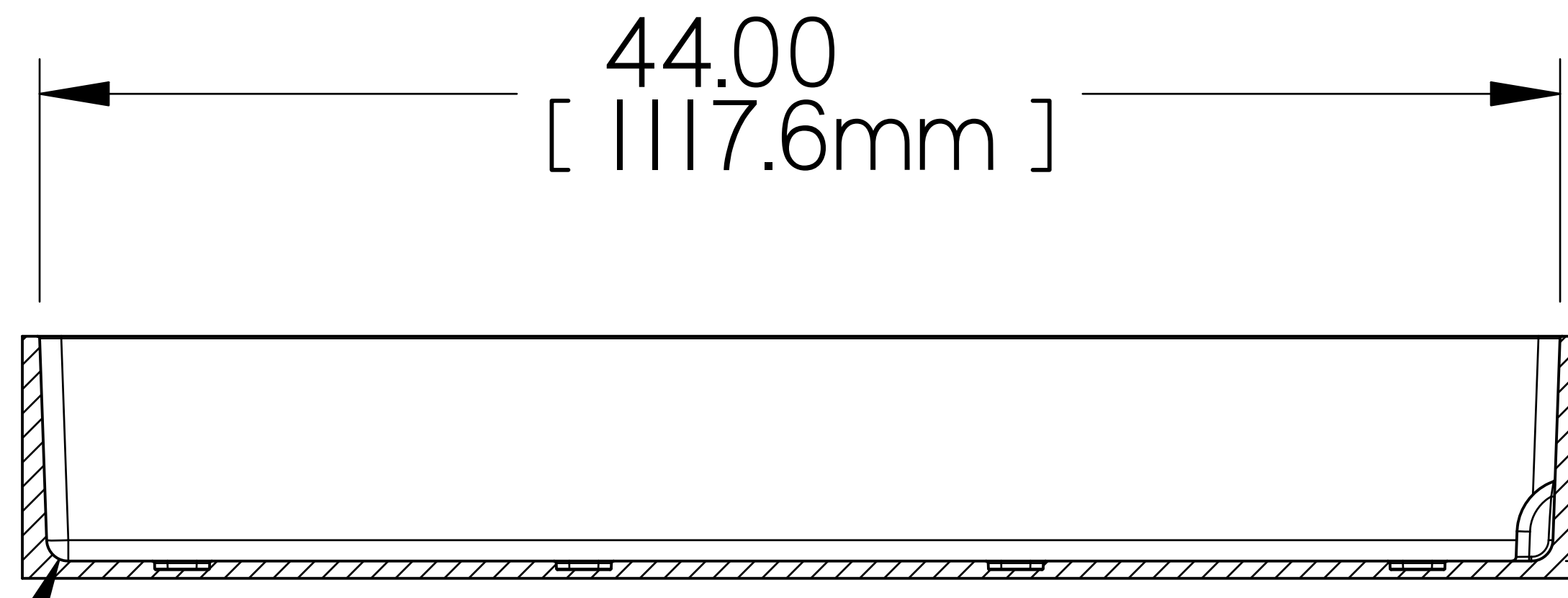
REVISION HISTORY				
ZONE	REV	E.C.O.	DESCRIPTION	BY/DATE



TOP VIEW
1:4

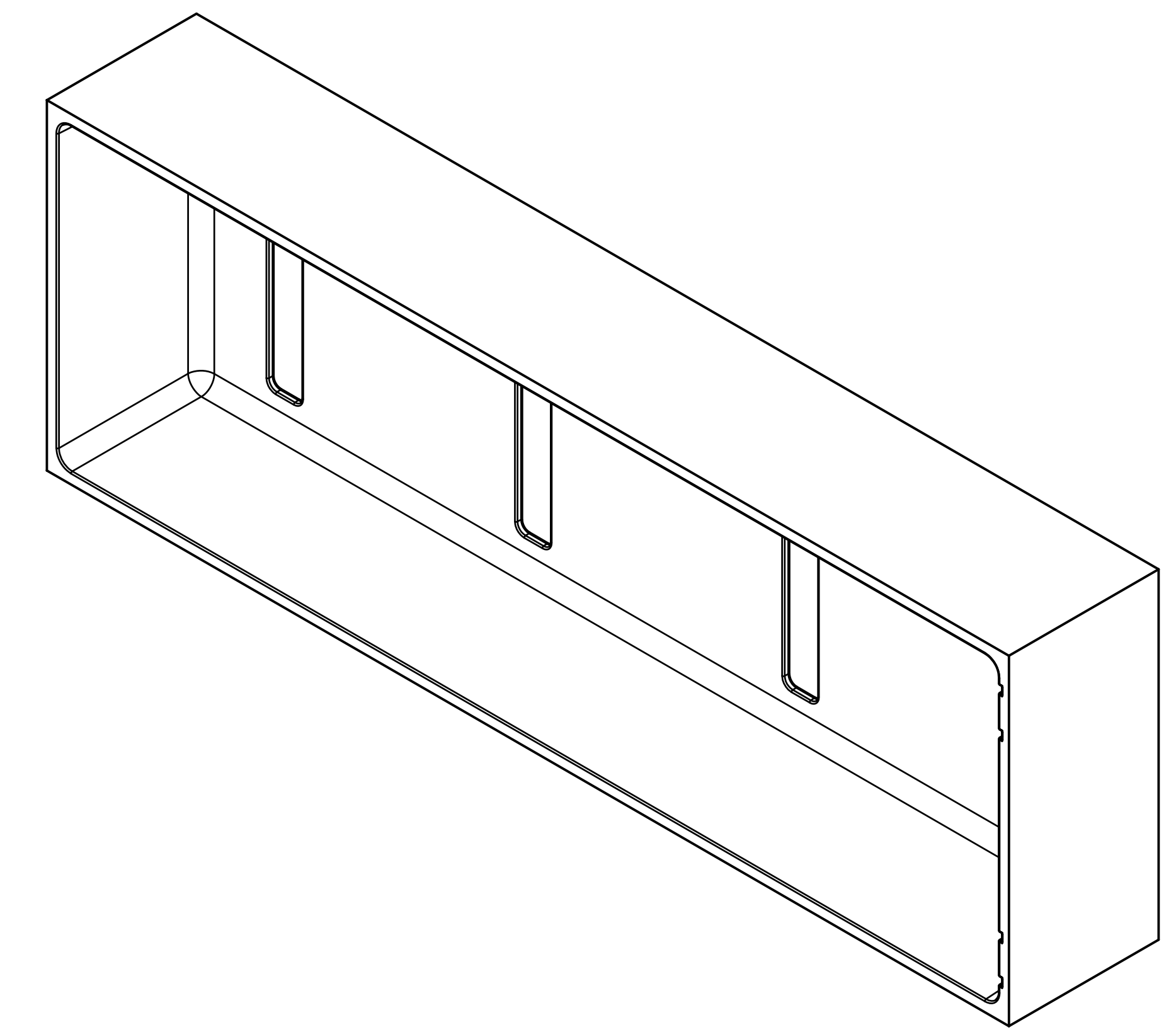


SECTION B-B



SECTION A-A

R .62 [15.9mm]



ISO VIEW



NEXT ASSY:	FINAL	SCALE	1/4
TOLERANCE	UNLESS OTHERWISE SPECIFIED	± .XX	± .XXX
DR.	D. SPRAGUE	DATE	10-05-18
ENGR.	D. SPRAGUE	DATE	10-05-12
CHKD.		DATE	

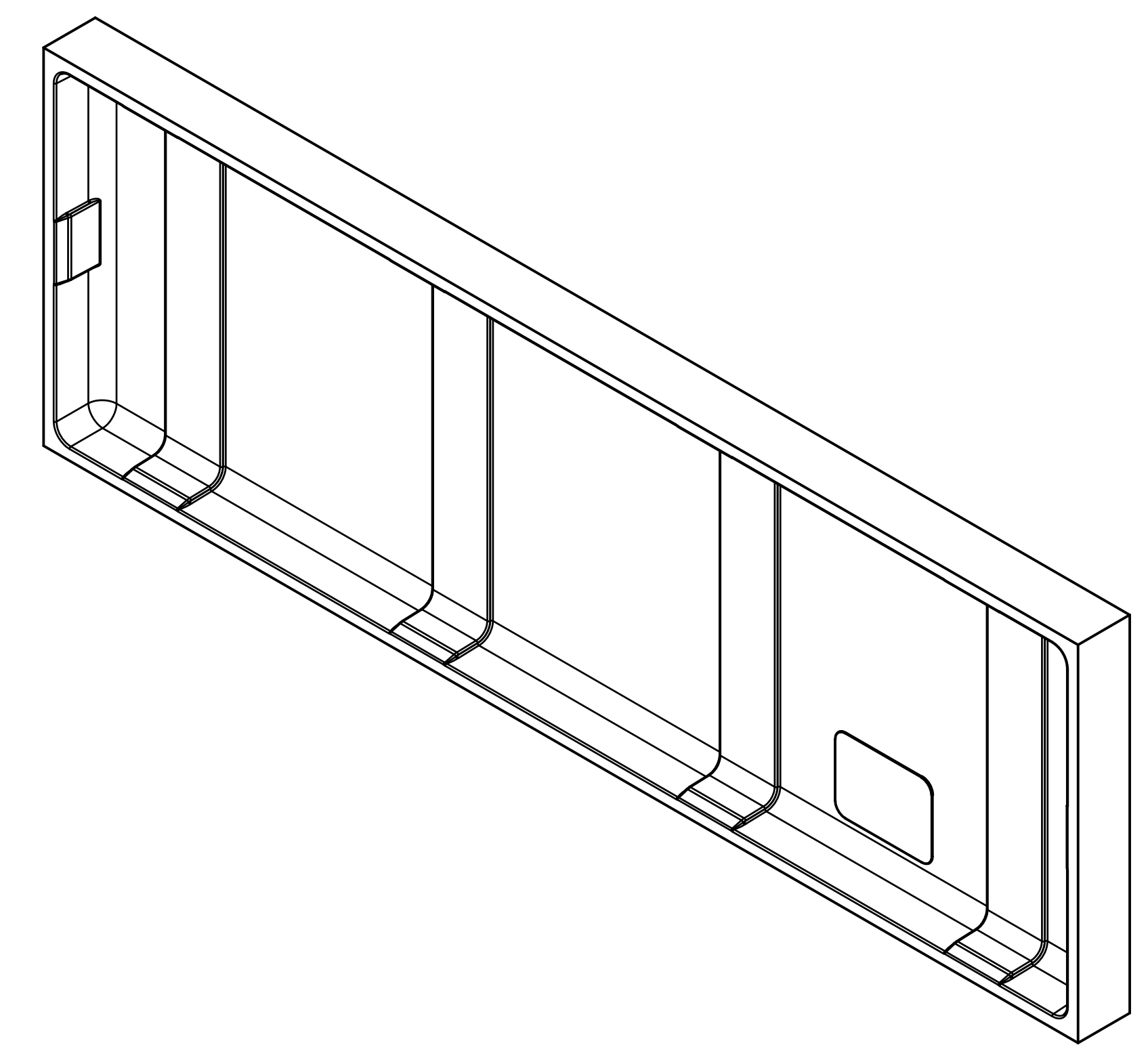
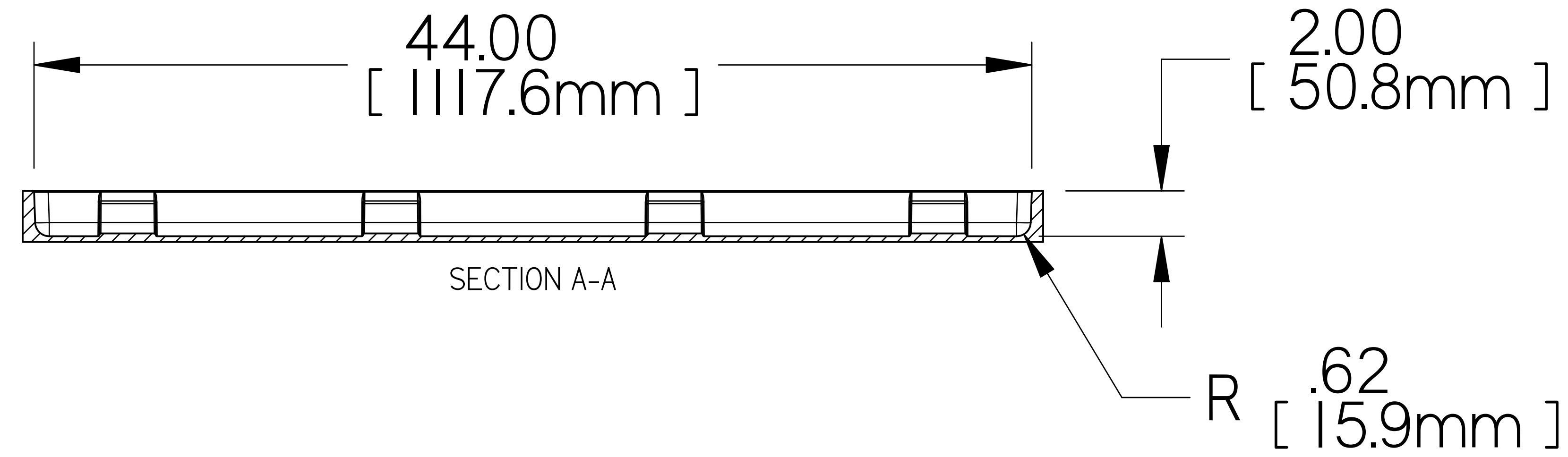
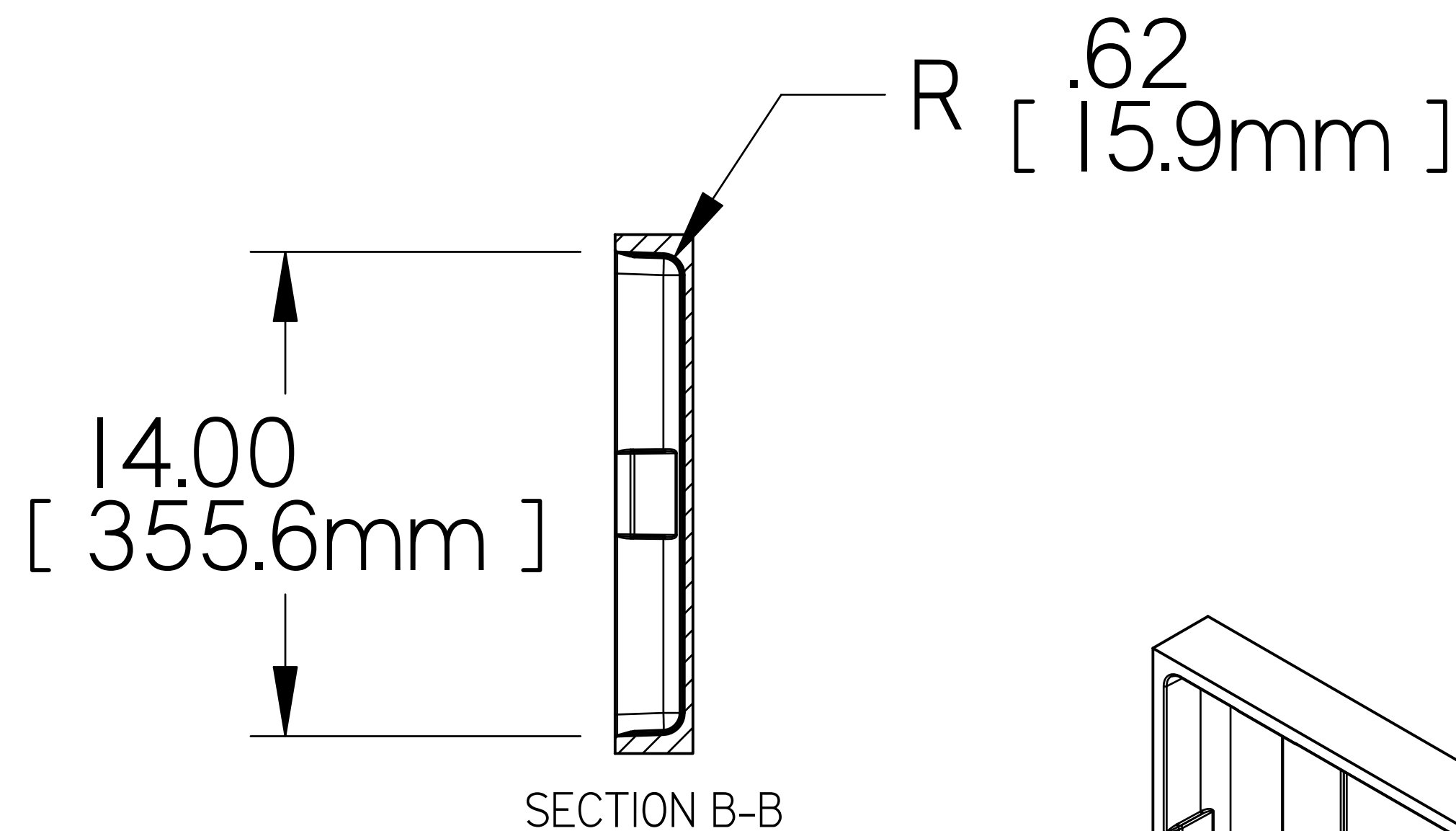
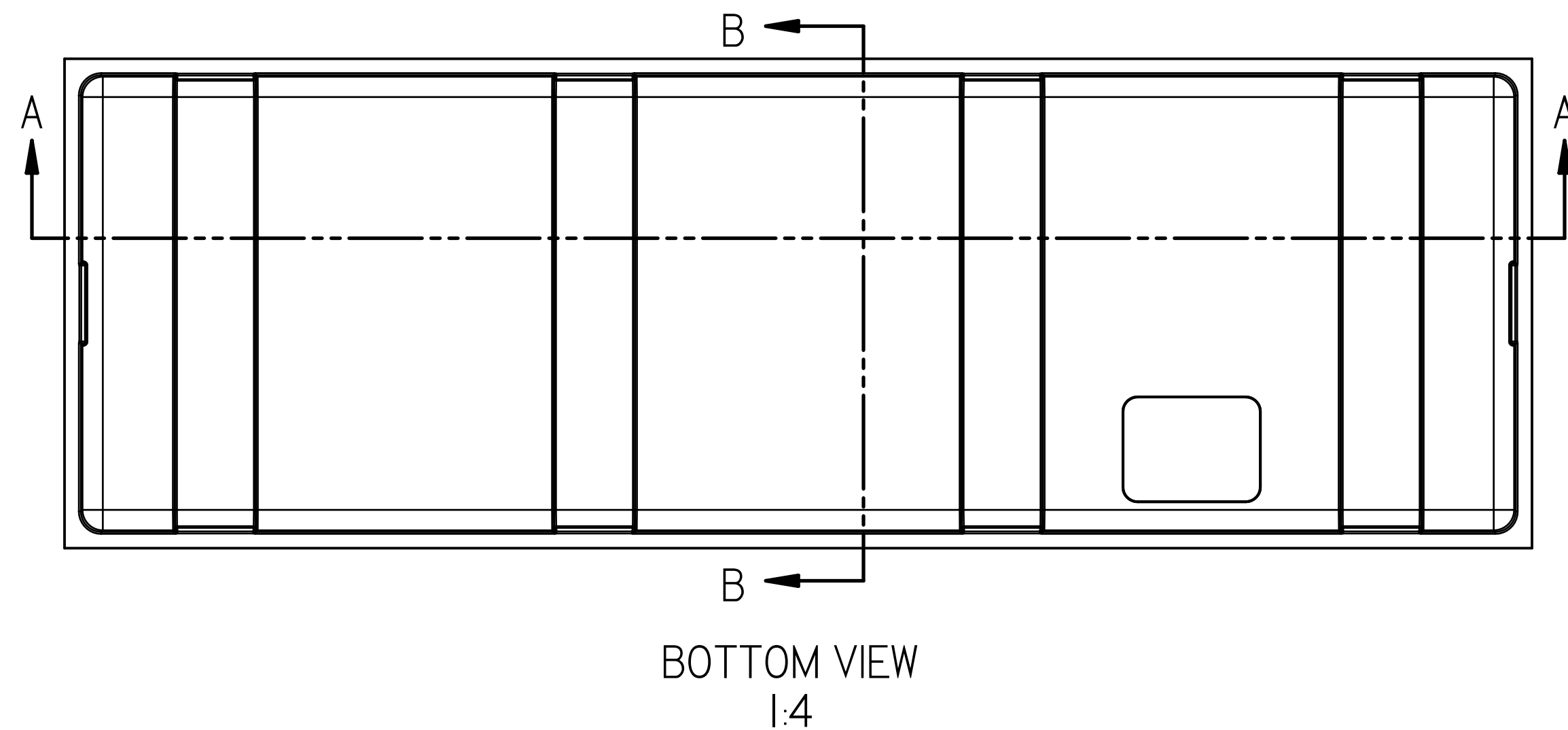
PELICAN PRODUCTS INC. PELICAN STORM CASE South Deerfield, Massachusetts 01373 USA			
TITLE IM3220 CASE BASE INTERNAL GEOMETRY			
SIZE	CAGE CODE	DWG NO.	REV
D		IM3220-B	-
PROJ. NO.	N/A		SHEET 1 OF 1

COMPUTER CONTROLLED DOCUMENT
MANUAL CHANGES NOT ALLOWED

DWG NO. IM3220-B SH. OF 1 REV -

NOTES:
 1. ALL DIMENSIONS ARE TO INTERNAL GEOMETRY OF CASE.
 2. CONTAINER SIDES ARE AT A 2° DRAFT.
 3. TOLERANCES UNSPECIFIED.

REVISION HISTORY					
ZONE	REV	E.C.D.	DESCRIPTION	BY/DATE	APPROVED/DATE



NEXT ASSY.	FINAL	SCALE	1/4
TOLERANCE	UNLESS OTHERWISE SPECIFIED	± .XX	± .XXX
DR.	D. SPRAGUE	DATE	10-05-18
ENGR.	D. SPRAGUE	DATE	10-05-12
CHKD.		DATE	
APVD.		DATE	

This drawing and all copies and the design and data shown are the property of PELICAN PRODUCTS, INC. So. Deerfield, MA USA and include proprietary information. The borrower by receipt or retention of the drawing agrees that, except as expressly authorized in writing by PELICAN PRODUCTS, INC. it will (1) not use the drawing or any copy of the design or data shown (2) not reproduce, copy, excerpt, exhibit or distribute the drawing or any copy for use by others and (3) upon demand return the drawing, all copies and all material copies therefrom.

PELICAN PRODUCTS INC. PELICAN STORM CASE South Deerfield, Massachusetts 01373 USA			
TITLE IM3220 CASE LID INTERNAL GEOMETRY			
SIZE	CAGE CODE	DWG NO.	REV
D		IM3220-L	-
PROJ. NO.	N/A		SHEET 1 OF 1

COMPUTER CONTROLLED DOCUMENT
 MANUAL CHANGES NOT ALLOWED

DWG NO. IM3220-L
 SH. OF 1
 REV -